

*DAMAC*

  
SAFA GATE  
SHEIKH ZAYED ROAD

NOMA  
PROPERTIES

URBAN VERVE  
MEETS NATURAL  
SERENITY







# THE HIGHLIGHT OF PANORAMIC LIVING





# YOUR GATEWAY TO THE SHEIKH ZAYED ROAD PLATINUM DISTRICT

SAFA GATE redefines the essence of the Platinum District's opulent living experience. It is your key to unlocking the best of Dubai's vibrant urban spirit. Step into a world where convenience meets sophistication, and make your mark in one of the most coveted address in the region.



RISE ABOVE THE CITY  
AND EXPERIENCE  
LUXURY THAT MAKES  
YOUR SPIRIT SOAR

  
SAFAGATE  
SHEIKH ZAYED ROAD

  
SAFAGATE





# YOUR TOWERING URBAN OASIS AWAITS

SAFA GATE stands as a landmark of architectural ingenuity and luxury living. Its sleek, soaring silhouette pierces the Dubai skyline, featuring a stunning glass façade that reflects the city's vibrant energy. The tower's distinctive design incorporates bold design elements, creating a visual masterpiece that is as functional

as it is beautiful. With its innovative sky gardens and panoramic viewing decks, SAFA GATE blurs the line between indoor and outdoor living, offering residents unparalleled views and a sense of floating above the bustling metropolis.





RESIDE IN THE  
HEART OF THE CITY

**SAFA GATE**  
SHEIKH ZAYED ROAD



7 MINS

BURJ KHALIFA



9 MINS

DUBAI INTERNATIONAL  
FINANCIAL CENTRE



10 MINS

THE STABLES DUBAI, MEYDAN



12 MINS

MGM RESORT ISLAND



14 MINS

DUBAI INTERNATIONAL AIRPORT



14 MINS

DUBAI HARBOUR



14 MINS

DUBAI CREEK GOLF  
& YACHT CLUB



16 MINS

PALM JUMEIRAH



35 MINS

JETEX VIP TERMINAL



DXB



BURJ  
KHALIFA



BURJ  
AL ARAB

UMM SUQEIM

SHEIKH ZAYED ROAD

DUBAI

SHEIKH MOHAMMED BIN ZAYED ROAD

EMIRATES ROAD

DAMAC  
HILLS

DAMAC  
Lagoons



DUBAI  
INVESTMENT  
PARK

AL YALAYIS ROAD

EXPO ROAD



EXPO 2020 VENUE



AL QUDRA ROAD

D2  
DAMAC HILLS 2







# A MESMERISING GALLERY OF MATCHLESS CITYSCAPES

Enjoy a never seen before perspective of Dubai's stunning natural landscape. Discover a world of natural wonder from the emerald expanse of Safa park flora to the tranquil embrace of the Jumeirah seascape. Every day

offers a new masterpiece painted across the infinite sky right outside your window. Not to mention the views of Dubai icons, such Dubai Canal, Burj Al Arab and Burj Khalifa across Sheikh Zayed Road.









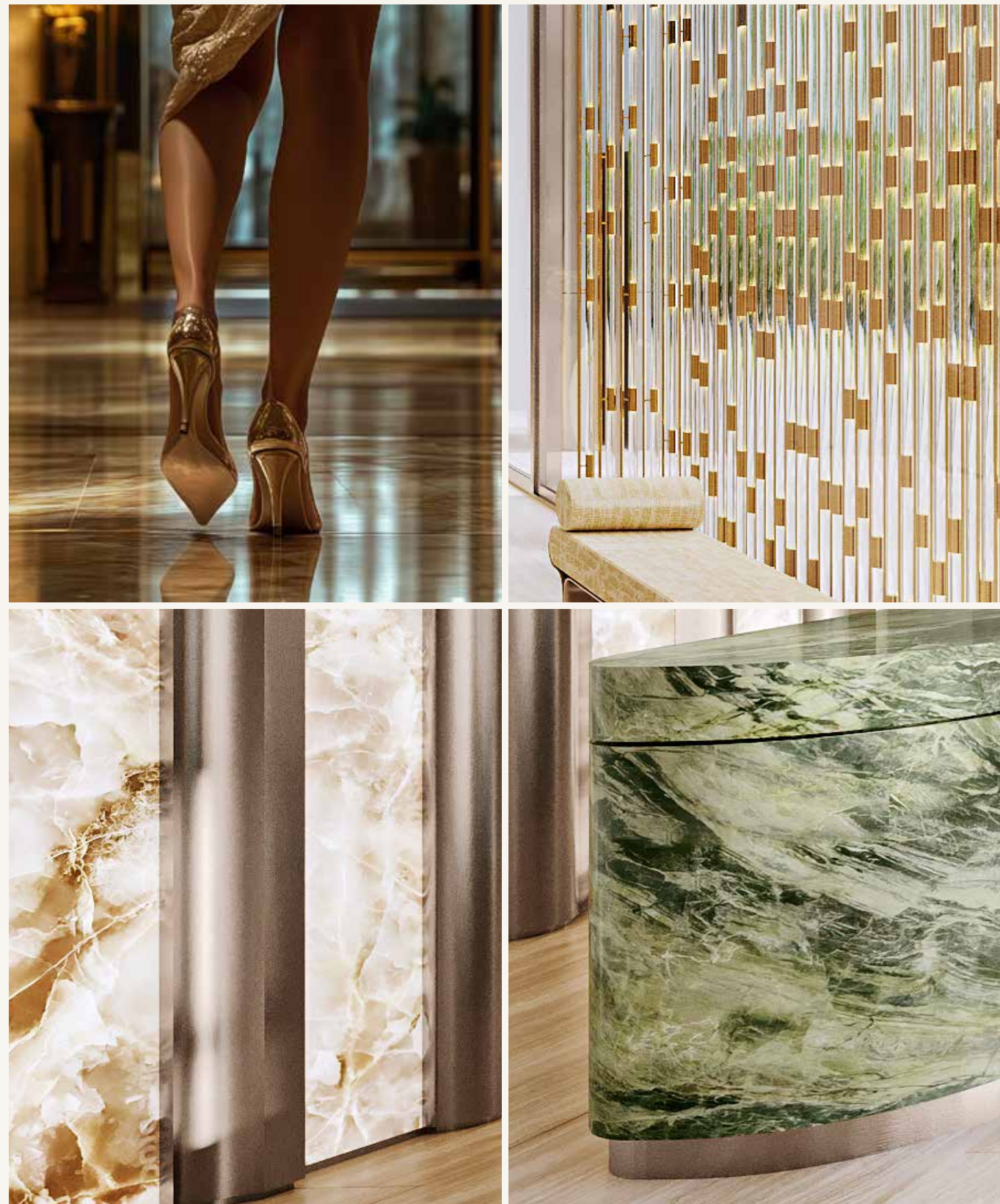
# THE EPICENTRE OF EFFORTLESS LIVING

Nestled along Sheikh Zayed Road, Safa Gate emerges as a sophisticated urban sanctuary seamlessly blending metropolitan energy with serene living. Strategically positioned beside the lush Safa Park and the Dubai Canal, this location offers residents an extraordinary lifestyle anchored by proximity to Dubai's most coveted destinations - from the vibrant City Walk and sophisticated Jumeirah to the iconic Dubai Mall and cultural Al Wasl Road.





# KINETIC GEOMETRY



Witness an architectural narrative that breathes and transforms. Safa Gate's design language explores dynamic interactions between solid and void, and a play of light and shadows to create a living structure that adapts and responds to its urban environment with remarkable sophistication and visual complexity. The design orchestrates an intricate dialogue between fluid form, material innovation, and human-centric spatial experiences.

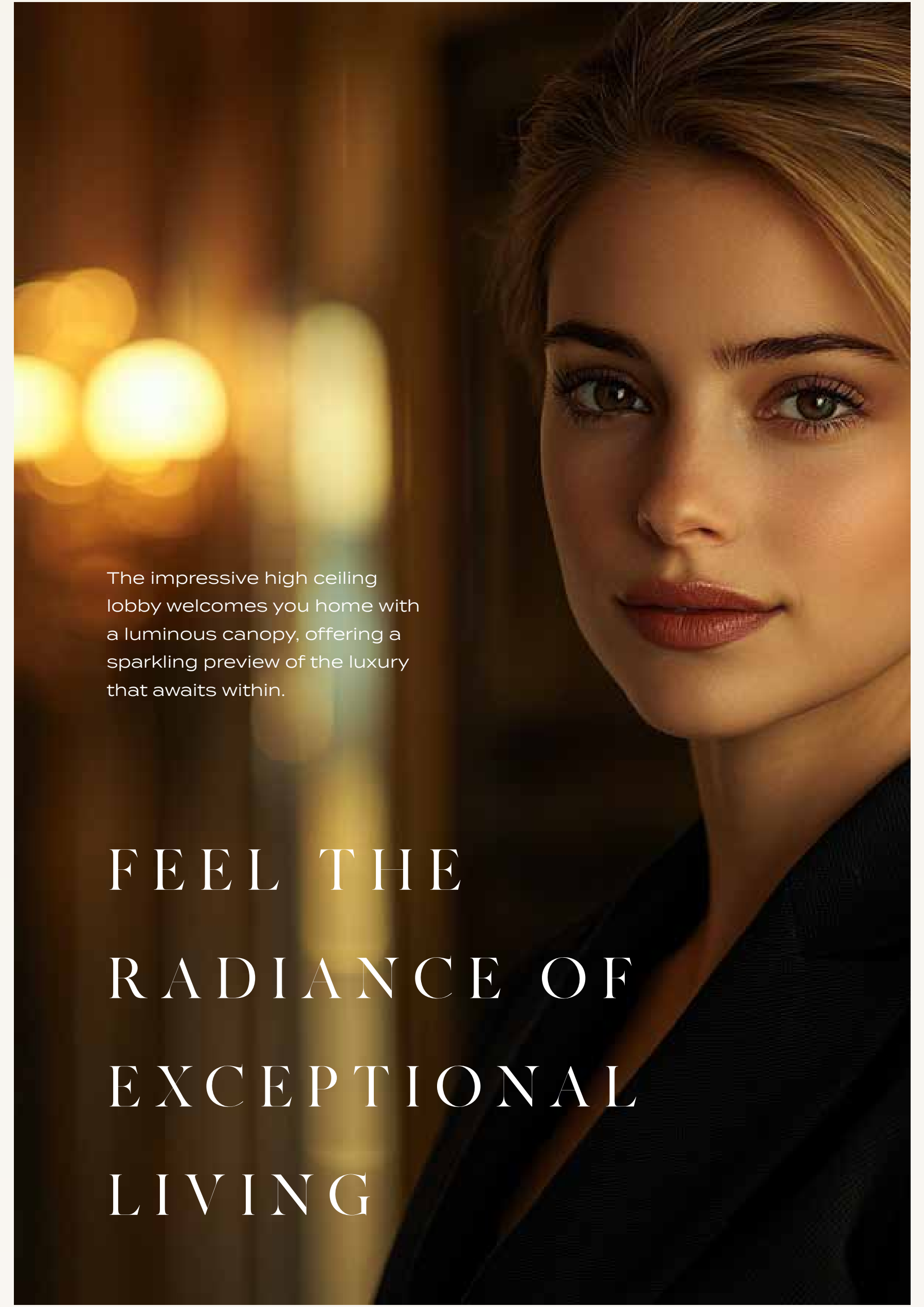


D A M A C S A F A G A T E





D A M A C S A F A G A T E



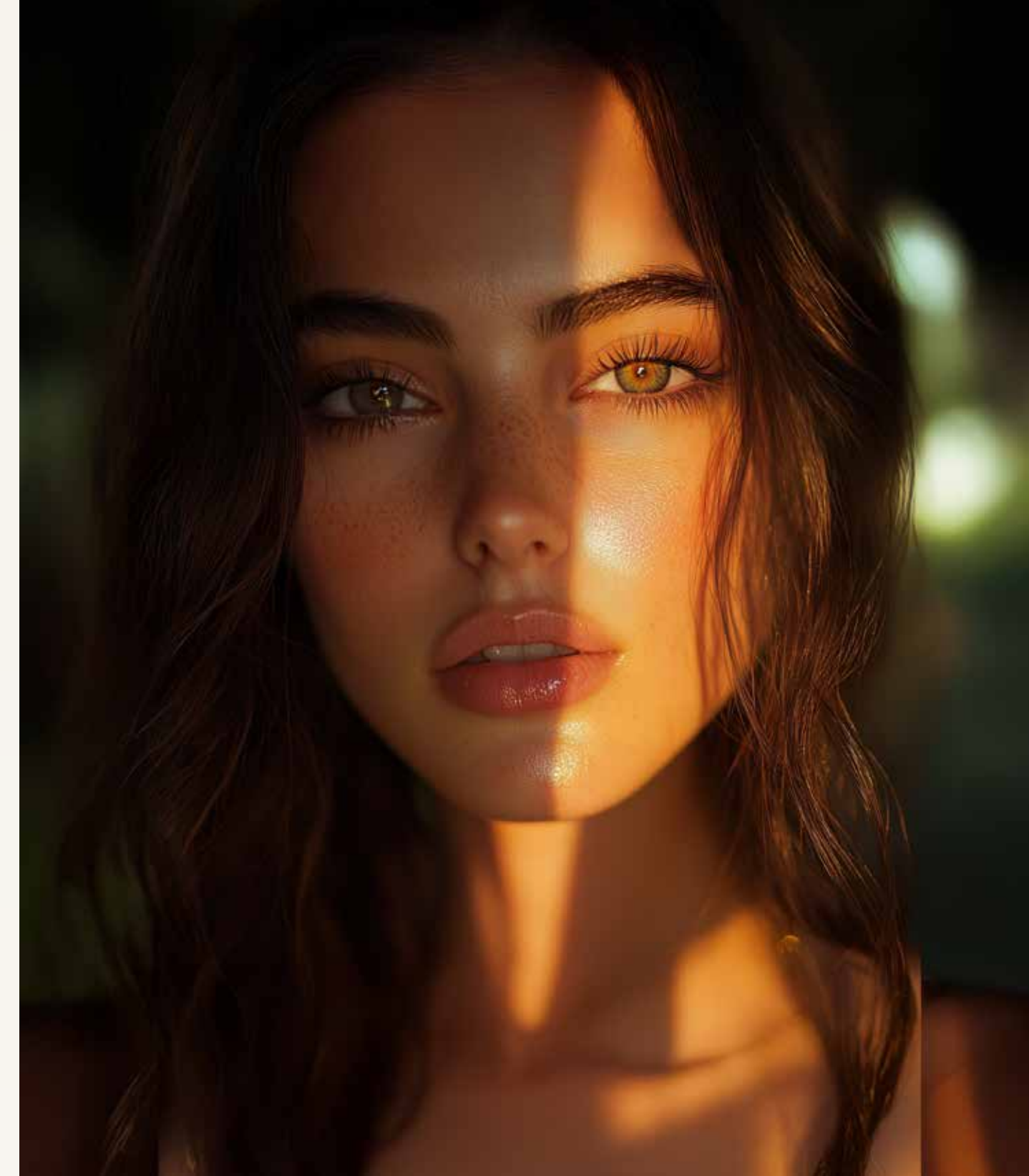
The impressive high ceiling lobby welcomes you home with a luminous canopy, offering a sparkling preview of the luxury that awaits within.

FEEL THE  
RADIANCE OF  
EXCEPTIONAL  
LIVING



# A CONNOISSEUR'S HAVEN

SAFARI GATE



Perched above the city, a private cigar lounge where you can pair your rare vintages with your cigar collection in an atmosphere of timeless sophistication. With intimate gathering spaces framed by panoramic views, this exclusive retreat transforms evening rituals into extraordinary moments.







# KALIEDOSCOPIC WONDERLAND



Watch the Aurora Pool transform before your eyes, as vibrant hues dance and shimmer across the water, creating a mesmerising spectacle.



# SINK INTO BLISS

Gather your friends and family for a memorable experience. Our circular sunken pool seating offers a unique and intimate space to unwind and socialize.







Experience the future of fitness in the Gravity Gym. Discover a new level of challenge and motivation in a state-of-the-art zone, inspired by the forces of gravity and celestial motion.

# OUT OF THIS WORLD FITNESS





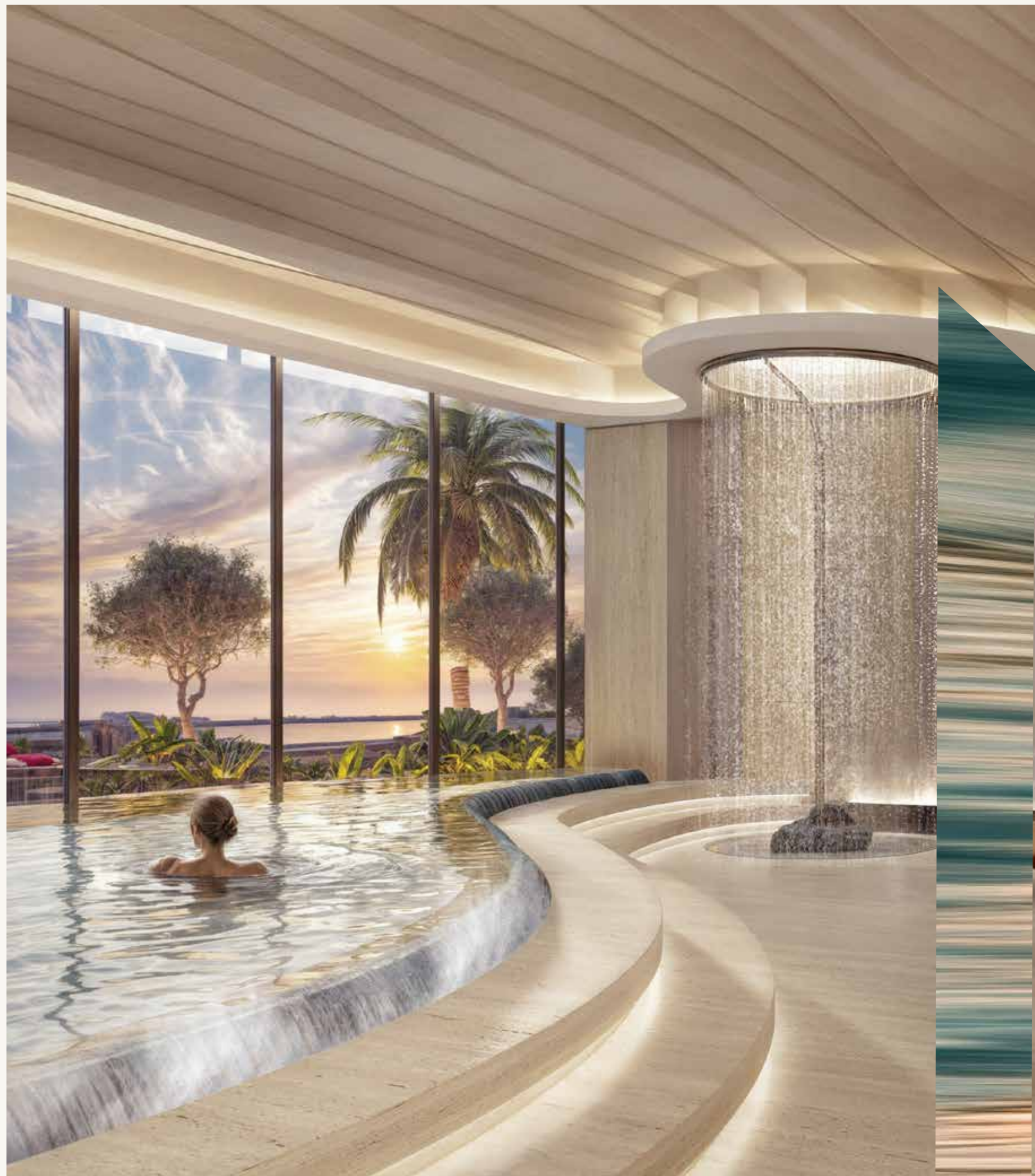


D A M A C S A F A G A T E



# ESCAPE TO BLISSFUL REJUVINATION

Enter the Lumière Spa, where golden light therapy and pristine hydrotherapy pools create an oasis of renewal. Our meditation dome, infused with choreographed light sequences and surrounded by living gardens, transforms wellness into an art. Here, ancient healing meets modern luxury, offering a sanctuary of radiant rejuvenation above the city.







# WORK MEETS WELLNESS

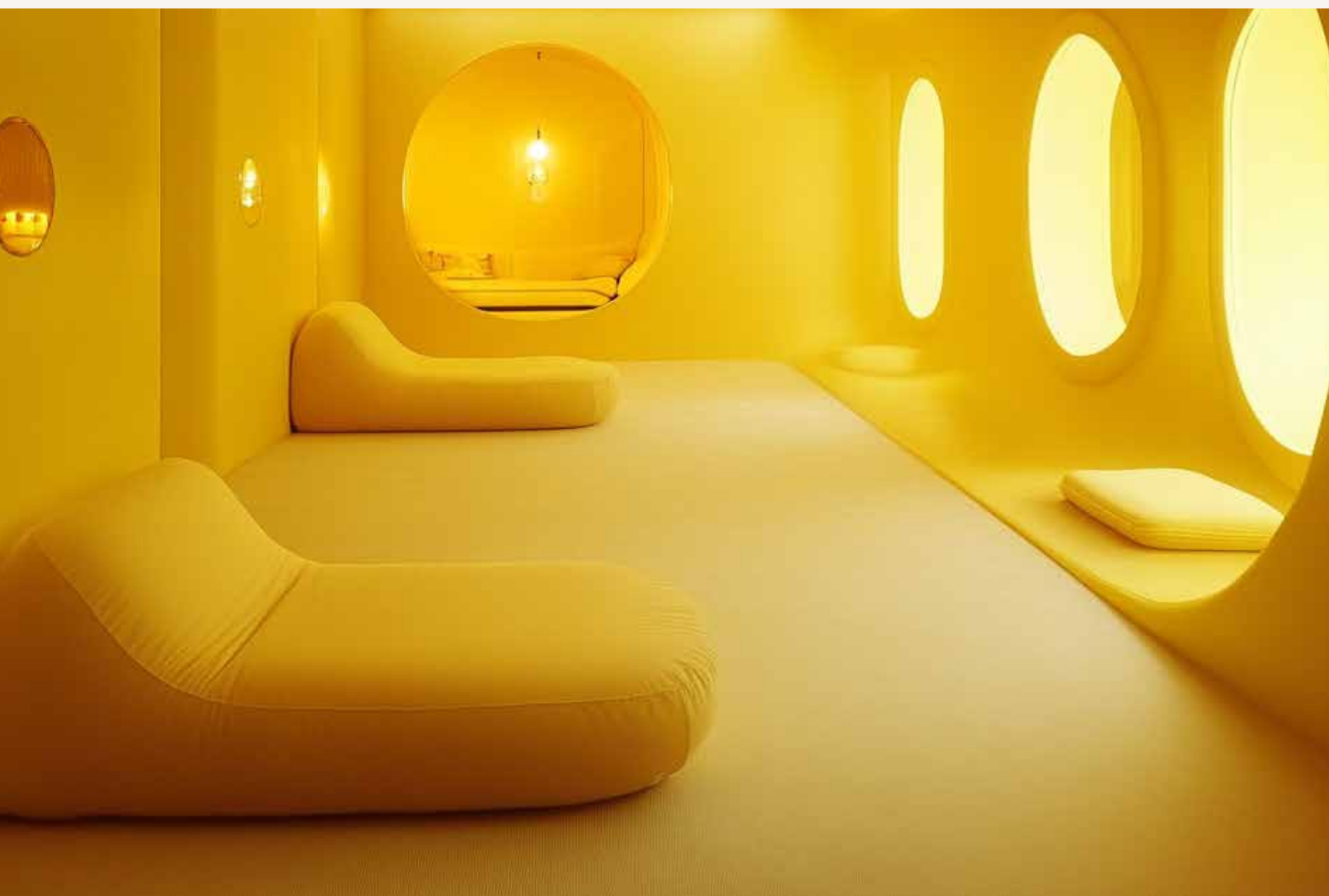
Experience the benefits of ergonomic furniture, tech integration, and natural elements in the Co-working Pods. Escape the noise and distractions to focus and recharge in a collaborative environment.

D A M A C S A F A G A T E





# THE LIGHT RETREAT



Step into a space where light becomes therapy. Our pioneering chamber harnesses chromotherapy technology to create an immersive haven of healing radiance. As gentle waves of light wash over you, feel the day's tensions dissolve in this groundbreaking fusion of wellness and innovation.





# COSMIC CURTAIN CALL



Enjoy screenings and performances at the exclusive Eclipse Theatre, featuring a stunning ceiling designed to mimic the celestial phenomenon of a solar and lunar eclipse.



# WORKOUTS WITH A VIEW

Break free from conventional fitness spaces. Our open-air gym on Level 5, transcends traditional workout environments, inviting you to challenge your body while your eyes feast on Dubai's breathtaking cityscape





# ENJOY AN ELEVATED RENDEZVOUS

Botanical artistry meets Dubai's golden hour, our rooftop sanctuary elevates the art of evening leisure. Nestled among curated gardens, this exclusive belvedere offers masterfully crafted drinks against a canvas of Dubai's most captivating sunsets. As day transforms to dusk, watch the city ignite while surrounded by the serenity of elevated gardens and the sophistication of artisanal mixology.





# SUNDANCE IN THE SKY

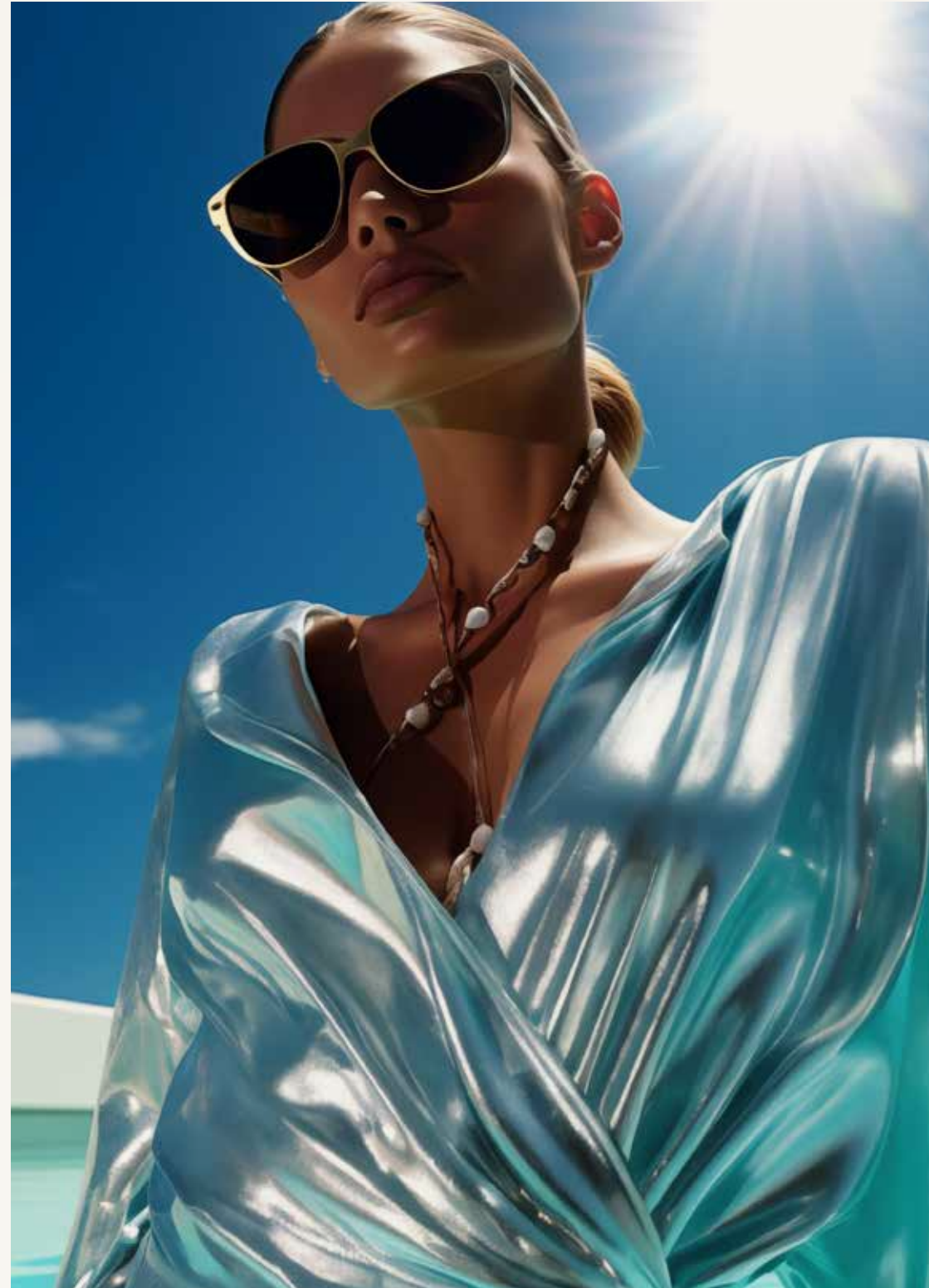
Ascend to a celestial perch, where Dubai unfolds beneath you in a breathtaking 360-degree panorama. Designed to echo the fiery dance of solar flares, this observation deck offers an unparalleled vantage point, a stage where the city's vibrant tapestry meets the vast canvas of the sky.





# YOUR AERIAL WELLNESS RETREAT

Escape the city's clamour and immerse yourself in tranquility. Our retreat pool, a sanctuary of serenity, invites you to unwind amidst a symphony of soothing water and the gentle embrace of native flora. Here, amidst the verdant tapestry and the murmur of flowing water, find your center and rediscover the art of peaceful repose.





RELAXATION MEETS  
INSPIRATION



Immerse yourself in serenity, where the tranquil embrace of our Zen plunge pool meets the breathtaking panorama of Dubai. Here, amidst the soothing murmur of water and the stunning cityscape, find a sanctuary for both productivity and profound relaxation. Let the tranquil environment inspire your thoughts and renew your spirit, offering a unique escape from the everyday.





THERE IS NO SOLITUDE IN THE WORLD  
LIKE THAT OF THE BIG CITY

— KATHLEEN NORRIS





# SKY MEETS SERENITY

Step into a world of unparalleled luxury where expansive living spaces meet breathtaking panoramas. Sunlight streams through floor-to-ceiling windows, illuminating the grand living room which features a sweeping duplex staircase that ascends to a private sanctuary above.











Indulge in the ultimate sanctuary within your private haven. The master bedroom, a symphony of opulence, promises a serene ambiance where each facet whispers classy luxury. Soft, plush textures caress your senses, while panoramic windows frame a mesmerizing vista of the city's mesmerising views. Here, amidst the grandeur, you'll feel like you're floating on air, with the world at your feet.

## YOUR ROYAL RETREAT









D A M A C S A F A G A T E



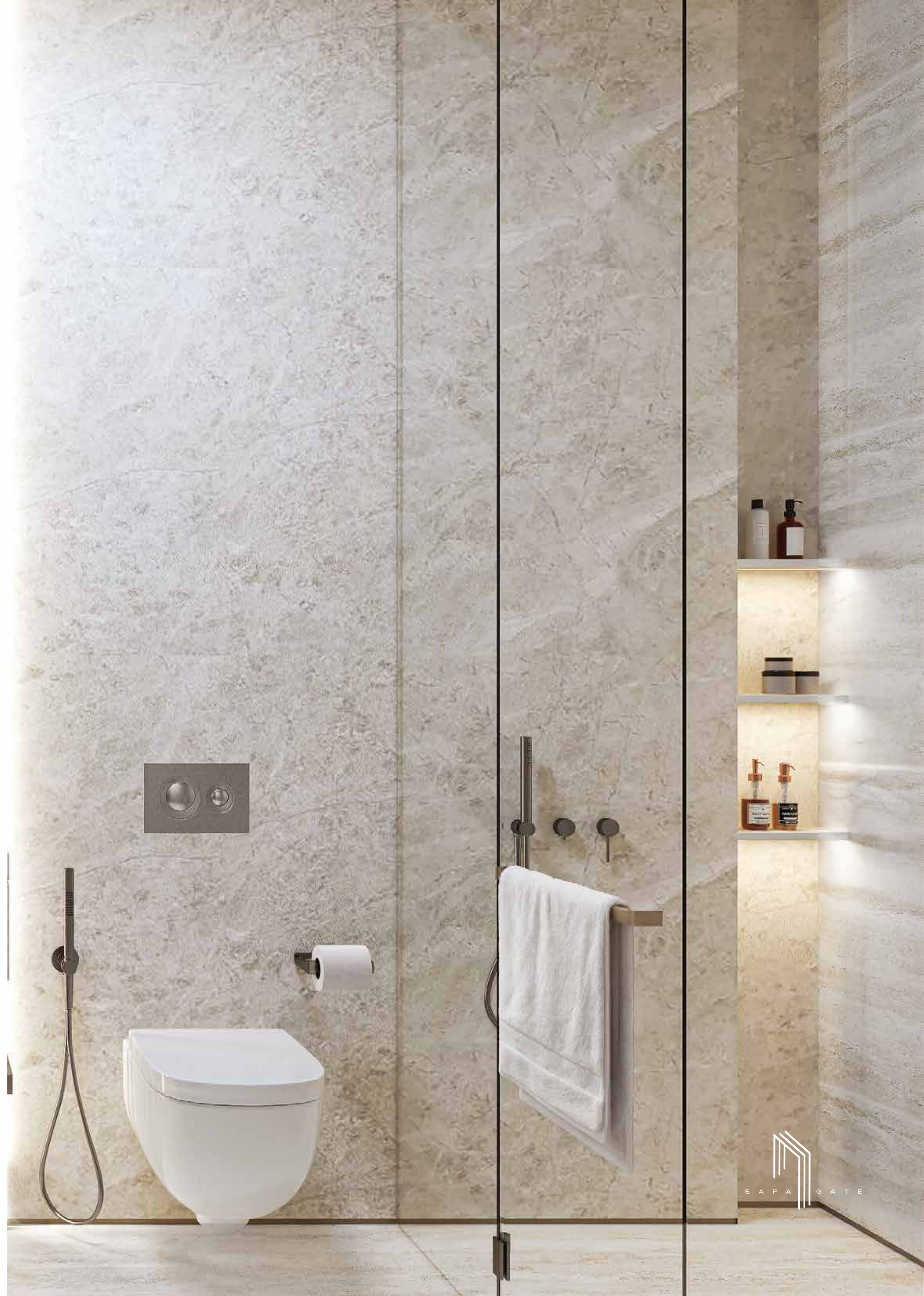


















# NOMA

PROPERTIES

## SALES OFFICE - DUBAI



+971 52 353 1811



office@nomapropertiesgroup.com

## SALES OFFICE - EUROPE



+48 530 088 222



office@nomapropertiesgroup.com



[www.nomapropertiesgroup.com](http://www.nomapropertiesgroup.com)

CONTACT US

